

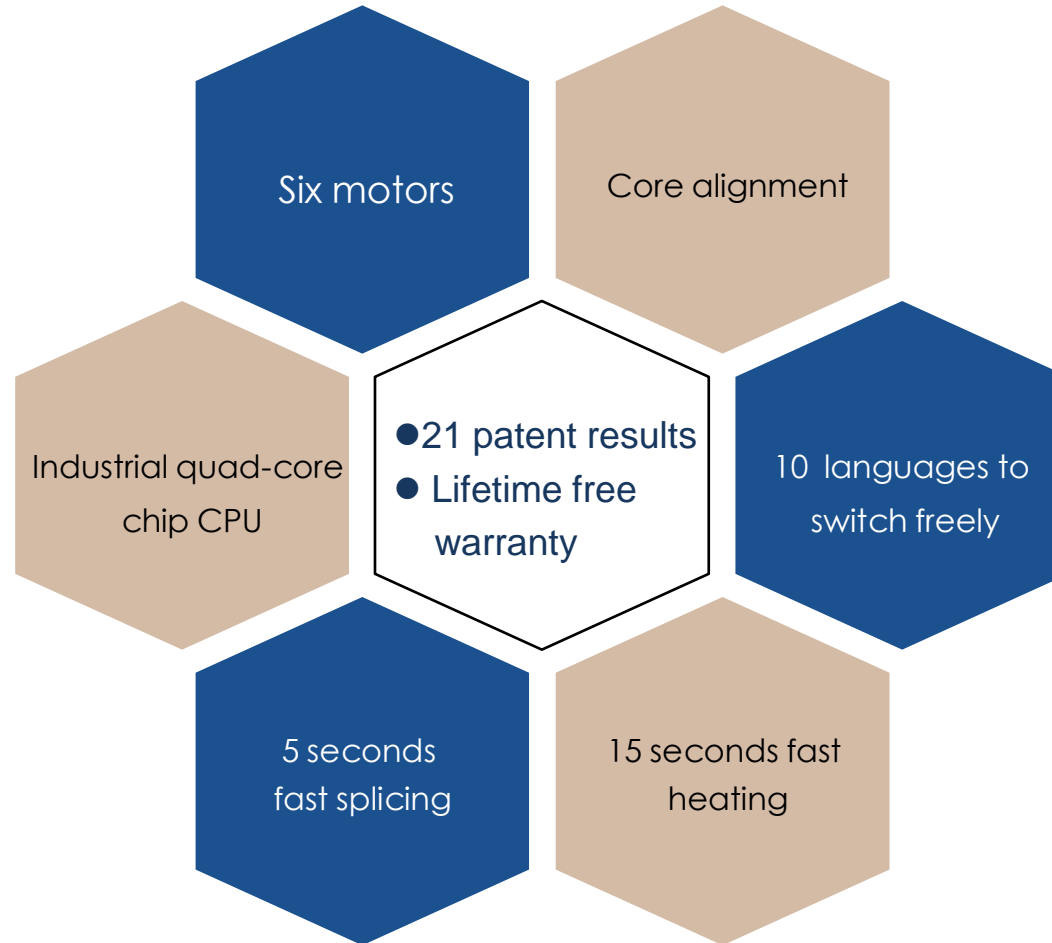
# OPTICAL FIBER FUSION SPLICER

OPTICAL FIBER FUSION SPLICER



# MASTERPIECE HIGH-END LUXURY

OPTICAL FIBER FUSION SPLICER



- Once splicing reaches to 50,000 times free replacement a new machine

# METAL BODY AESTHETIC DETAILS

OPTICAL FIBER FUSION SPLICER



**VFL:** Always on / flashing / off

**Power Meter:**

850nm/1300nm/1310nm/1490nm

/1550nm/1625nm Six states

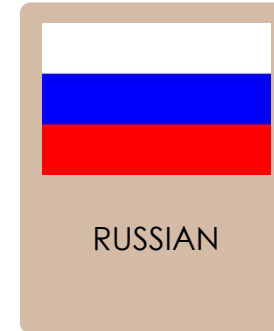
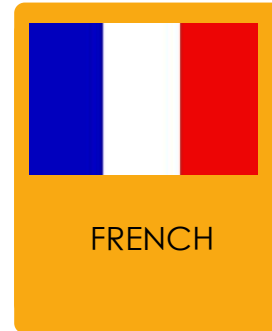
## BUILT-IN POWER METER AND VFL

Effectively measure connection loss, verify continuity, and help assess fiber link transmission quality.

# 10 LANGUAGES TO SWITCH FREELY

OPTICAL FIBER FUSION SPLICER

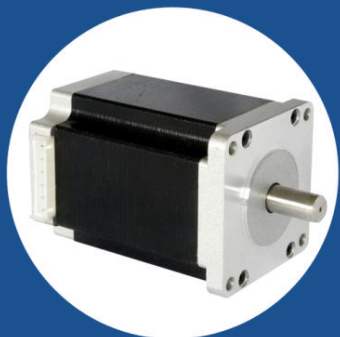
Covers the global major user market



# CORE PARTS QUALITY ASSURANCE

---

OPTICAL FIBER FUSION SPLICER



Siemens stepper motor



Roth ROUST linear guide



Sanyo lithium battery



Aviation metal material

# THE TOOLBOX

COMES WITH A STOOL TO FACILITATE  
THE CONSTRUCTION WORKERS.

OPTICAL FIBER FUSION SPLICER



Remove  
the stool



Do not need to take out the  
splicer machine from the  
toolbox while working.

Fiber cleave operator station

Two  
layers



Stool can bear  
**100kg**

# INDUSTRIAL QUAD-CORE CHIP CPU



Synchronous  
operation

speed  
response

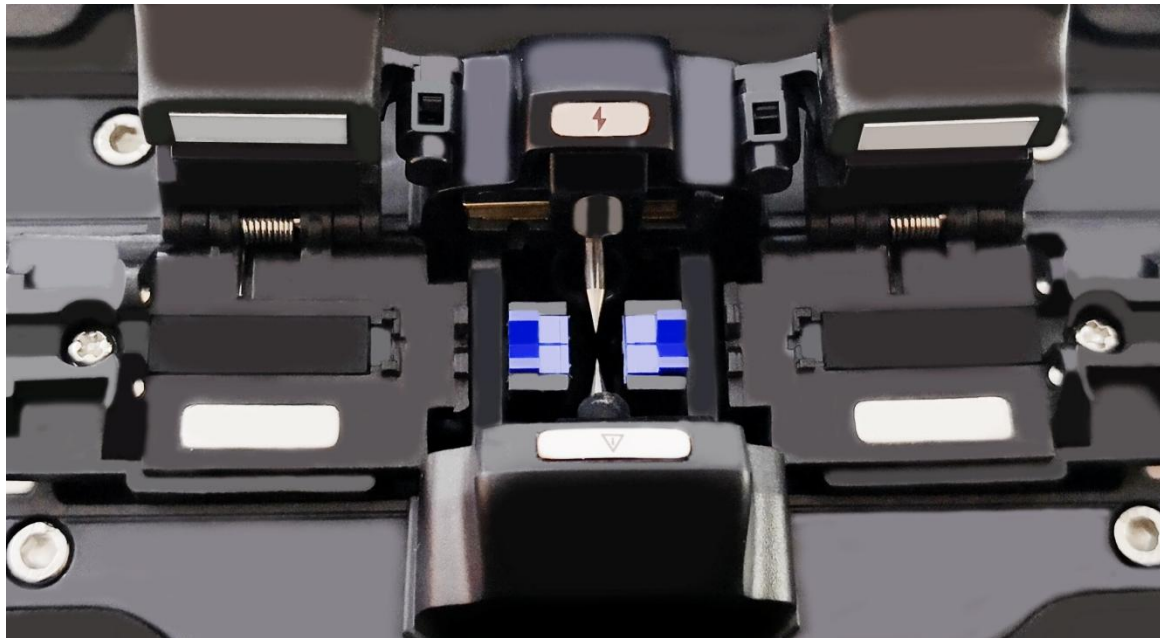
no  
jammed

super  
experience

# 3 IN 1 FIBER HOLDER

OPTICAL FIBER FUSION SPLICER

SM, MM, bare fiber, pigtail, rubber-insulated, multi fiber cable



# THE BATTERY POPUP AUTOMATICALLY



## 7800 mA high-capacity lithium battery

- charging time  $\leq 3.5$  hours
- continuous splicing and heating  
about 200 times



Press to popup  
the battery

# Show good performance in plateau, desert, and extreme cold environment

OPTICAL FIBER FUSION SPLICER



# BASIC PARAMETER

OPTICAL FIBER FUSION SPLICER

Fiber alignment	Core/cladding alignment / Manual alignment	Built-in lighting	easy for night operation
Splicing time	5S	Tension Test	Standard 2N
Heating time	15S	Fiber holders	3 in 1 fiber holder, SM, MM, bare fiber, pigtail, rubber-insulated, multi fiber cable
Heating mode	Automatic heating ( Preheating )	Magnification	300 for X or Y view, 150 for X or Y view
Focus mode	Six motors Auto focus	Screen	5 inch TFT color display
Applicable Fibers	SM(G.652&G.657)、MM ( G.651 ) 、DS(G.657)、NZDS ( G.655 )	Splicing Mode	Normal / high precision splicing
Splice Loss	0.025dB ( SM ) 、 0.01dB ( MM ) 0.04dB ( DS/NZDS )	Splicing method	Fully automatic、 Step by step splicing
Control technology	Real-time control and calibration of fusion ARC	Splicing record storage	Synchronize to the phone, the server to cloud storage unlimited
Return loss	Better than 60DB	Built-in battery	7800 mA high-capacity lithium battery, charging time ≤ 3.5 hours, continuous splicing and heating about 200 times
Fiber diameter	Cladding Diameter : 80-150μm Coating Diameter : 100-1000μm	Power supply	Input AC100-240V 50 / 60HZ, output DC13.5V / 4A, the current power mode can be identified, real-time detection of battery power
Fiber Cleave Length	Coating less than 250μm : 8-16mm Coating less than 250-1000μm:16mm	Operating Conditions	Temperature -15 ~ +50 °C, humidity: <95% RH (no condensation) Working altitude: 0 ~ 5000m. Resist max. wind speed: ≤ 15m / s
Software updates Length	Automatically update、 Update by a key	Shrinkable tube	60mm、 50mm、 40mm、 25mm
Boot time	1 second	Product protection	Waterproof, dust proof, shock-resistant
Visual Fault Locator	Power:15mw,2hzflashing And Constantly Bright Mode	Optical Power Meter	Wavelength:850nm、 1300nm、 1310nm、 1490nm、 1550nm、 1625nm Measuring Range:-70 ~ +6db Absolute Error:<0.3db(-50dbm ~ +3dbm Range)

# Accessories in the tool box

OPTICAL FIBER FUSION SPLICER



Fiber Cleaver



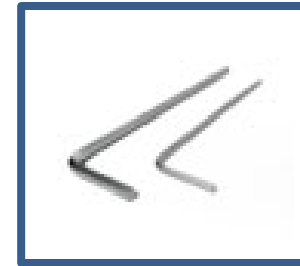
Spare electrode



Wire stripping pliers



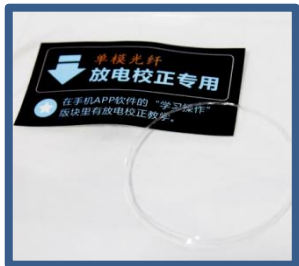
Miller stripper



Hex key



Carrying case



Fiber for  
ARC calibration



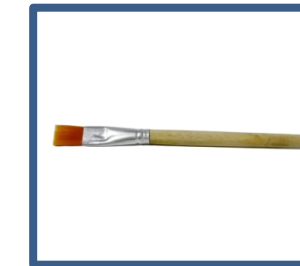
Strap



Power Adapter



Alcohol Bottle



Brush



User's manual  
Quality Certificate  
Warranty Card

# SIZE

OPTICAL FIBER FUSION SPLICER

